

Niskala

Audio & Koan® Music Player
for Windows® 3.1 & Windows® 95



Jamuud



CD ROM

1/ Koan pieces, SoundFonts and software -
see pages 7 to 15

DO NOT PLAY TRACK 1 ON AUDIO PLAYER

2/ Sayan 6:45

3/ Gliding Briefly 6:07

4/ Niskala 8:46

5/ Swastika Bells 2:49

6/ Wind Cycle 6:41

7/ Giza Lento No.2 4:24

8/ Domain 3:59

9/ Sekala 5:10

10/ Kelod / Kaja 2:44

11/ Aman Dana 3:46

12/ Aswan 3:01

13/ Bira 4:51

14/ Landscape No.1 - The Baptism of Solitude 4:57

Niskala

This album was produced entirely using Koan Pro and the AWE32 soundcard. The only additional sounds are ambient sound tapes, recorded in West and North Africa, Greece, Turkey and Indonesia, which are 'flown in at random'. A chance system was set up to determine which tape, if any, was used on a specific track. All recordings were made at my recording studio, The Shrine, during the second half of 1996.

For all the software systems/pieces a General MIDI (GM) version is included, but as some were written for specific SoundFonts the GM version pales in comparison. I have attempted to keep the spirit of the original but the sonic balances are invariably different. Don't expect miracles but accept them gracefully should they occur.

All Systems Devised By Jamuud. Recordings published by Copyright Control. Copyright on recordings, pieces and soundfonts exclusively licensed to SYFYO Ltd. Koan Software copyright 1991-1996 SYFYO Ltd. All rights reserved.

Jamuud appears courtesy of Loop Guru and North/South Records.

Other Loop Guru recording can be found on North / South Cds:-

The Third Chamber Guru 100 CD

Amrita Guru 200 CD

Catalogue of Desires Volume 3 Guru 300 CD

Dedicated to Salman Gita for constantly guiding me beyond the sensible

Shrinic Blessings

Clare White, Sam and Ruth, Mad Jym, Elmer, Didahl Bulbul, Bob Collins, James Clayton, Push and Isabelle, Jamie, Edward Christie, KP, Melanie Hardy, Daniela Rezza, Dave Parker, Jeremy Tranter, Jameela Siddiqui.

Particular thanks go to Tim & Pete Cole and Tim Didymus for their help and encouragement.

Contact Loop Guru at P.O. Box 9029, London E2 8SU

Diskala is a Balinese word that has no definite transliteration but can be felt as "the magic hidden underneath". In Bali many rituals and ceremonies take place that can be enjoyed on an external level by the casual observer. What we see is "sekala", the form and the ceremony, but what is unseen, the faith and the magic, is "diskala".

One of the biggest musical influences in my life has been trance and healing music. Many cultures use repetitive, hypnotic rhythms and melodies to induce a trance for spiritual or healing purposes. The Balautchis of the region around the Iran-Pakistan border use a system of melodic rhythms to cure ailments and spiritual disturbances by playing a series of pieces to find which has the desired reaction. Once found the specific piece is played intensively, gradually increasing in speed to cause the patient to fall into a trance and the malady can be exorcised.

Probably the greatest influence of the last 15 years has come from Indonesian music, particularly Gamelan music from Bali, the courts of Central Java and Sundanese Degung. Some of the pieces on this album use "soundfonts" which contain samples of my own Gamelan purchased from Solo in Java.

When I first experienced the sound of Balinese Gamelan in 1980 it gave me the inspiration I had been looking for to compose music from outside the western rock idiom. I had been a painter who was disillusioned by a medium where (under normal circumstances) only one copy of a work existed. Having decided that I would like to compose music I toyed guitars, drums and other conventional Western instruments but what I really wanted was the magic and textures that I had used whilst painting. For the next ten years I set about exploring the wealth of sounds, scales, rhythms and textures used in Asia, Africa, the Middle East and Eastern Europe. The textures and

intensity of passion that existed in these music's made me lose my taste for Western pop and rock.

Since 1980 I have been obsessed by different sounds and different ways of working. One (or several) of these ways has manifested itself as "Loop Guru" with my partner Salman Gita. Others have taken me more towards "soundscapes" of which this collection could be considered part of. Musical painting that can evoke a place, a time or a feeling. No-one apart from the composer can really understand what was intended but people can perceive their own paintings and visit their own landscapes.

Generative music holds many delights for the composer as well as the listener. Since I started writing music I have always had an interest in systems that can be employed to generate music. The hard part has often been in creating a system that generates music that is rhythmically and harmonically pleasing and not just pure chance or random music that contains great theory but (on the whole) unlistenable content. I would listen endlessly to three tape loops playing simultaneously. My flatmates had serious doubts about my sanity. They didn't hear music, they heard repetitive noise, but I found that once the common material had been eliminated from the conscious brain what was left was the subtleties of slight change of rhythm or notes playing together that produced a new harmonic. One of the delights of using Koan Pro is that as a composer I can set parameters that make a system but I do not know exactly how a piece will evolve due to the probabilities and mutations set-up.

When Salman and I formed Loop Guru in 1985 we were fed up with the standard guitar, bass, drums format and even more disillusioned by synthesiser pop prevalent at the time. So we armed ourselves with plenty of

lo-fi technology - a cheap 4 track, a mixing desk and as many tape players as we could get our hands on. The initial idea being to use tape loops (for underlying rhythms), tape sound collages (cassettes containing environmental sounds, chants, solo instruments etc.) and live playing (tuned percussion, drones, Asian and African instruments, prepared pianos etc.) either on tape or overdubbed.

The initial results were often chaotic but we soon found that random tape collages produced moments of extraordinary magic. The next problem to overcome was to increase the probability of those moments occurring. Gradually the style settled down and we found ways of refining the pieces so that the generative process was more organised and we began to recognise what-went-with-what. We incorporated more tape machines that had variable speed control, then a computer where 3 and a quarter bar patterns can be played against a repeating 5 bar pattern. Always with a search for organic quality and spiritual intensity.

Since 1991, when the first record was released the technology available had also increased but the processes learned in early experiments still formed a vital part of the compositions. In the studio every piece is played forwards, backwards and at every possible speed. Sonic Chinese whispers would be introduced whereby the only part you were allowed to hear (when playing) was the last part recorded. A tape machine and a CD player are always playing somewhere in the background during mixing and incorporated in a mix.

Over the years we continued to release our collages on a cassette series called "Catalogue of Desires". Catalogue of Desires Vol 3 was released by North/South Records on CD in June 1996. But most of our other compositions also contain random elements which we then choose to keep or ignore.

Jamud Guru

The generative Koan pieces in Diskala, below, can be found in track 1 of the CDROM, along with the Koan Web software to play them on your PC - see next page. There are 2 albums, both of which are optimised for the Creative Labs AWE32/8B32 soundcards. However, you can try GIM DISKALSKA on any GIM wavetable soundcard, but DISKALASKA is specifically for the AWE32/8B32 soundcards, as some pieces use SoundFonts - special sound samples.

No	Title	GIM album GIM DISKA	SoundFont album DISKALA	SYB
1	Sayan	Yes	Yes	FOREST1
2	Gliding Briefly	Yes	Yes	FOREST1
3	Diskala	Yes	Yes	GAMELAND
4	Swaastika Bells	Yes	Yes	
5	Wind Cycle 1	Yes	Yes	
6	Giza Lento No.2	Yes	Yes	ORCHPS
7	Domain	Yes	Yes	DRUMMS1
8	Sekala	Yes	Yes	FLUTE 5
9	Kelod / Kaja	Yes	Yes	
10	Aman Dana	Yes	Yes	MANDOLIN
11	Aswan	Yes	Yes	
12	Bira	Yes	Yes	MBIRAS
13	Landscape No.1	Yes	Yes	ORCHPS
	Baptism of solitude			
14	Garuda	Yes	Yes	GAMELAND
15	Light Sky	Yes	Yes	
16	Shape Needles	Yes	Yes	
17	Poros	Yes	Yes	GAMELAND
18	Valley 1	Yes	Yes	ORCHI
19	Shadowplay	Yes	Yes	GAMELAND
20	Air Story 3	Yes	Yes	ORCHPS
21	Jaka	Yes	Yes	
22	Tranic	Yes	Yes	
23	Besikih Chant	Yes	Yes	
24	Sorrow	Yes	Yes	ORCHPS
25	White Sands No.2	Yes	Yes	
26	Cove	Yes	Yes	ORCHPS
27	Diskala long version	No	Yes	GAMELAND

Mini User Guide for **SSEYO[®] Koan[®] Web Platinum**



SSEYO Koan Web Platinum

SSEYO Koan Web Platinum is the KoanMusic Player for:

- The Koan pieces in Niskala (some of which contain SoundFonts - see system requirements)
- Any other Koan pieces you may have
- Koan pieces on the WWW
- GM/GS/XG/SoundFont MIDI files as well!

System requirements for Koan Web Platinum: 66MHz 486 PC or higher, 8Mb RAM, Microsoft Windows 3.1x/ Windows 95/ Windows NT 4, Mouse, CD ROM drive, 7Mb free hard disk space, soundcard (Wavetable for standard GM Koan pieces, or, for Koan pieces using SoundFonts, a Creative Labs AWE32/64 SB32/64 with 0.5MB or higher SoundFont DRAM).

KoanMusic



An introduction to KoanMusic by Tim Cole, Co-founder of SSEYO

"The idea for KoanMusic was originally conceived back in '86, and has been our life's work ever since. We wanted to create a computer music system which could affect you on an emotional level, by enhancing or filtering your perceptions, and provide ever-changing, eventually interactive, music. A key premise was that much of the musical 'processing' would be carried out by the listener, who would bring to it their own perceptions, situation and 'wetware', so internalising and personalising the experience.

KoanMusic can be thought of as being comparable to a ball bearing traveling down a guide or chute. Each time the ball bearing makes the journey it will travel a different path, but the available paths are constrained by the chute. In a similar way KoanMusic is governed by an envelope of possibilities, these being set by the piece author with Koan Pro. Each time a Koan piece plays it will have certain boundaries set by the author, outside which the music will not go. All this means that the music can be different each time.

After much deliberation in early 1994 the term 'Koan' was finally chosen for the music. Koan is a Zen word meaning a mystery or puzzle with no logical solution. We felt that it was a good choice as the music is a 'now' phenomenon (much of Zen philosophy is about the present, as opposed to the future or past). In addition, there is a subtle intangibility to it through the use of random, changing events. As it is created in real-time there is no real 'solution' to the music generated.

We do hope you enjoy your KoanMusic experience. One day you may wish to create your own, and we look forward to being here for you when you do."

Installing Koan Web Platinum V2

1. Important: Before installing Koan Web Platinum please read the license.
2. Carefully remove the Niskala CD ROM from the disk tray and insert into your PC's CD ROM drive.
3. *Win 3.1(16 bit)*: Select Run from the File Menu of the Program Manager.
Win 95/NT4 (32 bit): Press the Start button on the Task bar and select Run .
4. Choose a SETUP for your system (Win 3.1 = SETUP16 / Win 95/NT4 = SETUP32)
5. Enter the following: *drive*:\SETUP16.EXE or *drive*:\SETUP32.EXE
where *drive* is the drive letter of your CD ROM drive, e.g.
D:\SETUP16.EXE
6. Choose your installation directory and press Continue. The installation will now take place and a program group/folder will be made for you.

Notes:

- 1) We recommend you keep albums and their pieces in the same directory.
- 2) Koan Web Platinum requires that the Windows MIDI Mapper must be set up correctly for use with your soundcard; follow the instructions given in the manual that came with it, otherwise refer to our online help files. Also, check out the readme file (READKWPT.TXT) containing any information not included elsewhere.

Support, serial number and registration

30 days support is provided from when you purchase the product. If you contact us you will need to quote your serial number, which is to be found on your license agreement. You should have already sent in your completed registration card. Please refer to the online help file for further details.

Terminology

Piece - A piece is the special Koan file that is created by a Koan artist using Koan Pro or Koan X (the Koan authoring systems) and then saved to an SKP (Koan encrypted Play file). The SSEYO Koan Music Engine (SKME) interprets the settings of the 150 or so Koan parameters in the piece, creating a series of beautiful and ephemeral ever-changing musical soundscapes. We use the term KoanMusic to describe this music real-time created music. Koan Web can play pieces with the extensions SKP , SKD (Koan Pro/Koan X Design file) or MID (MIDI file). Note that Koan Music is generated in real-time whereas MIDI files are fixed.

Album - A collection of Koan pieces (in SKP or SKD format), MIDI files or a mixture of both. The album file has the SKA extension.

The modules

Player module

Controls the playback of the current piece, its volume, its piece position and other settings. Also launches the various modules that are part of Koan Web Platinum.

Analyzer module

Displays the 'frequency' or MIDI channel, showing more of what is happening as the music plays.

Viewer module

Shows the list of pieces in the album and gives brief details on each, or gives more details on a piece you choose. Select one to play by double clicking on it. Call up the Album Editor from here, as well.

Screensaver module

Creates shapes and colours, moving and changing in time to the music.



Using Koan Web Platinum

Koan Web is as easy to use as a CD player. Just load an album/piece and play it!

- To display/hide the menu bar double click on any modules or press Esc.
- Check the extensive online help for more information.

Button Opening and closing Modules



Show or hide the modules with these buttons in the Player Module.



This button on the Player Module closes Koan Web Platinum.

Button Opening and playing Albums and pieces (Player module)



Open an Album or Piece: Alternatively select File Open from the menu. Select an album or piece and press Enter.



Play an Album or Piece: Alternatively select Control Play from the menu. Either the first piece in the album or the piece that is highlighted in the Viewer will then play.



Play Next Piece: Alternatively select Control Next from the menu.



Play Previous Piece: Alternatively select Control Previous from the menu.



Fast Forwards through piece: Alternatively select Control Fast Forward from the menu.



Rewind back though piece: Alternatively select Control Rewind from the menu.



Stop a piece: Alternatively select Control Stop from the menu.



Pause a piece: Alternatively select Control Pause from the menu.

The Album Editor



Pressing the Album Editor button on the Viewer module or selecting View Album from the menu will call up the Album Editor.

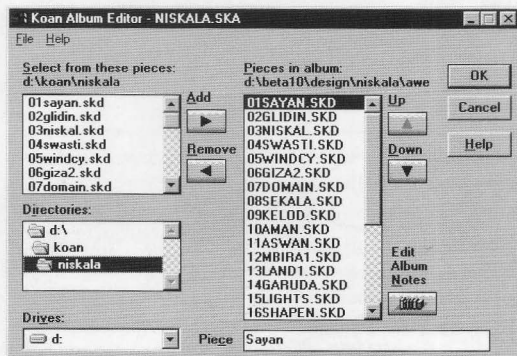
In Brief...

To open an Album

- 1 Select File Open or double click on album

To create/edit an Album

- 1 Select File New
- 2 Find the pieces
- 3 Add/remove/reorder
- 4 Save album or cancel
- 5 Add album notes



More details (also see online help)

- 1 File New (creates a new album with SKA filetype); File Open (opens an existing album with SKA filetype); File Save (saves the album); File Save As (saves the album to a specified file name); File List (show list of most recently opened albums); File Exit (exits the Album Editor)
- 2 Uses the standard Windows directory/search lists to find your files.
- 3 Select here the files you want to add to the album from the "Select from these pieces" list box (shown in 2) and then press the Add button. To remove files from the album, select them and press Remove (Note: this does not remove the files from your PC hard drive). To change the piece order highlight a piece and use the Up and Down buttons to reposition it.
- 4 Press OK to save your changes or Cancel to close the Editor without saving changes.
- 5 Press the Album Notes button to add your own notes to the album or view those already there.
- 6 This shows the long piece name (also shown in the Piece Notes dialog).

Koan Web Platinum - Other controls and information

Player Module



Track time

Piece length and time playing

Random Play

Random or ordered (list) playback

MuteAll

Press to toggle Muting on/off

Piece position

Draggable visual indicator

Volume control

Drag up/down with your mouse

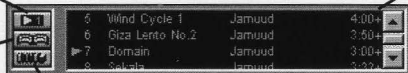
List/Copyright

Toggles between piece list and copyright info

Piece Notes

Notes about the piece provided by the author

Viewer Module



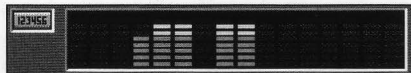
General info

Shows piece position in album, title, author and length. Double click to play.

Album Editor

Calls up the Album Editor

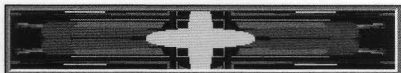
Analyzer Module



MIDI/KHz

Toggles between displays of MIDI channel / visual indication of pitch

Screensaver Module



Colours and shapes

Synched to the music. Click in Window for full screen/ press Esc for small screen.

Master controls

Allow you to change master settings for Reverb, Chorus, Pan and Volume. Off the Control Menu.

Always on top

Allows Koan Web to always stay on top. Off the Application main menu.

Window background

Choose a 16 colour bitmap to act as the background for the Koan Web Platinum modules. Off the View menu.

Web connection

If you have a WWW browser application you can connect direct to the SSEYO website to see the latest SSEYO Koan news (see online help).

View Setup command- Setup options (see online help)

Automatically Play

Starts playing an album/ piece on loading Koan Web

Conductor Timer:

Low/high priority - how 'tight' the performance is

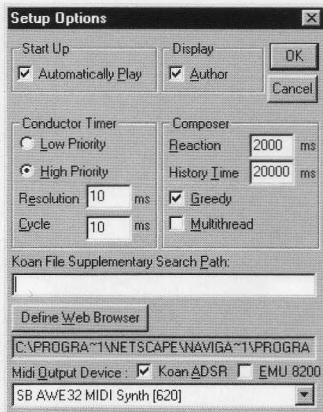
Resolution/Cycle - how fast the SKME composes in high priority mode

Koan Supplementary Path

Where the SKME will also look (e.g. for SBKS/files)

Define Web Browser

If you have Web Browser software this is where you tell Koan Web about it



MIDI Output Device

Select your soundcard

Author

Shows piece the author in the Viewer Module

Composer:

Reaction Time - how far in advance music is composed

History Time - period over which harmonisation continues

Greedy

Priority on system resources

Multithread (32 bit version only) -

Multithreading enabled

Koan ADSR/EMU8000

Extra settings for newer soundcards/specific cards

Online Help

There is a large online help file that provides you with much more information than we could squeeze into this manual. To call up help on a specific item select Shift+F1 and click on the area about which you want help, or select F1 for general help.

Copyright

All Koan pieces are copyright works. Under no circumstances are any of the pieces in this title to be put on the internet or recordings of them made, unless otherwise explicitly stated. Please refer to the software licence and see the Copyright section in the online help.

SSEYO Ltd, Weir Bank, Monkey Island Lane, Bray, Berks, SL6 2ED, UK Email: koaninfo@sseyo.com

WWW: <http://www.sseyo.com> CompuServe: GO SSEYO MSN: GO KOAN Tel: +44 (0)1628 29828 Fax: +44 (0)1628 29829

© Copyright 1991-97 SSEYO Ltd. All rights reserved. SSEYO, Koan, Konstellations and the SSEYO logo are either registered trademarks or trademarks of SSEYO Ltd in the UK and/or other countries. All other trademarks or registered trademarks are the property of their respective holders.

